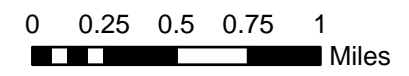


BUSINESS IMPROVEMENT DISTRICTS

CITY OF ARVADA

- LEGEND**
- Arvada West Town Center B.I.D.
 - Indiana Marketplace B.I.D.
 - Olde Town B.I.D.
 - Arvada City Limits



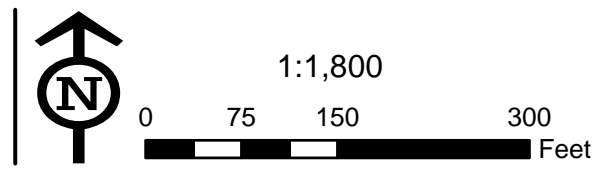
DATE: 4/25/2017

The maps provided are graphical representations intended for general informational purposes only, and may not reflect the most current information or conditions. THE CITY OF ARVADA MAKES NO WARRANTY OF MERCHANTABILITY OR WARRANTY FOR FITNESS OF USE FOR A PARTICULAR PURPOSE, EXPRESSED OR IMPLIED, WITH RESPECT TO THESE GRAPHICAL REPRESENTATIONS OR THE UNDERLYING DATA. Any users of these graphical representations or map products accepts same AS IS, WITH ALL FAULTS, and assumes all responsibility for the use thereof, and further covenants to hold the City harmless from and against all damage, loss, or liability arising from the use of this map product, in consideration of the City's having made this information available.



**ARVADA WEST TOWN CENTER
BUSINESS IMPROVEMENT DISTRICT**
CITY OF ARVADA Effective 8/24/1999

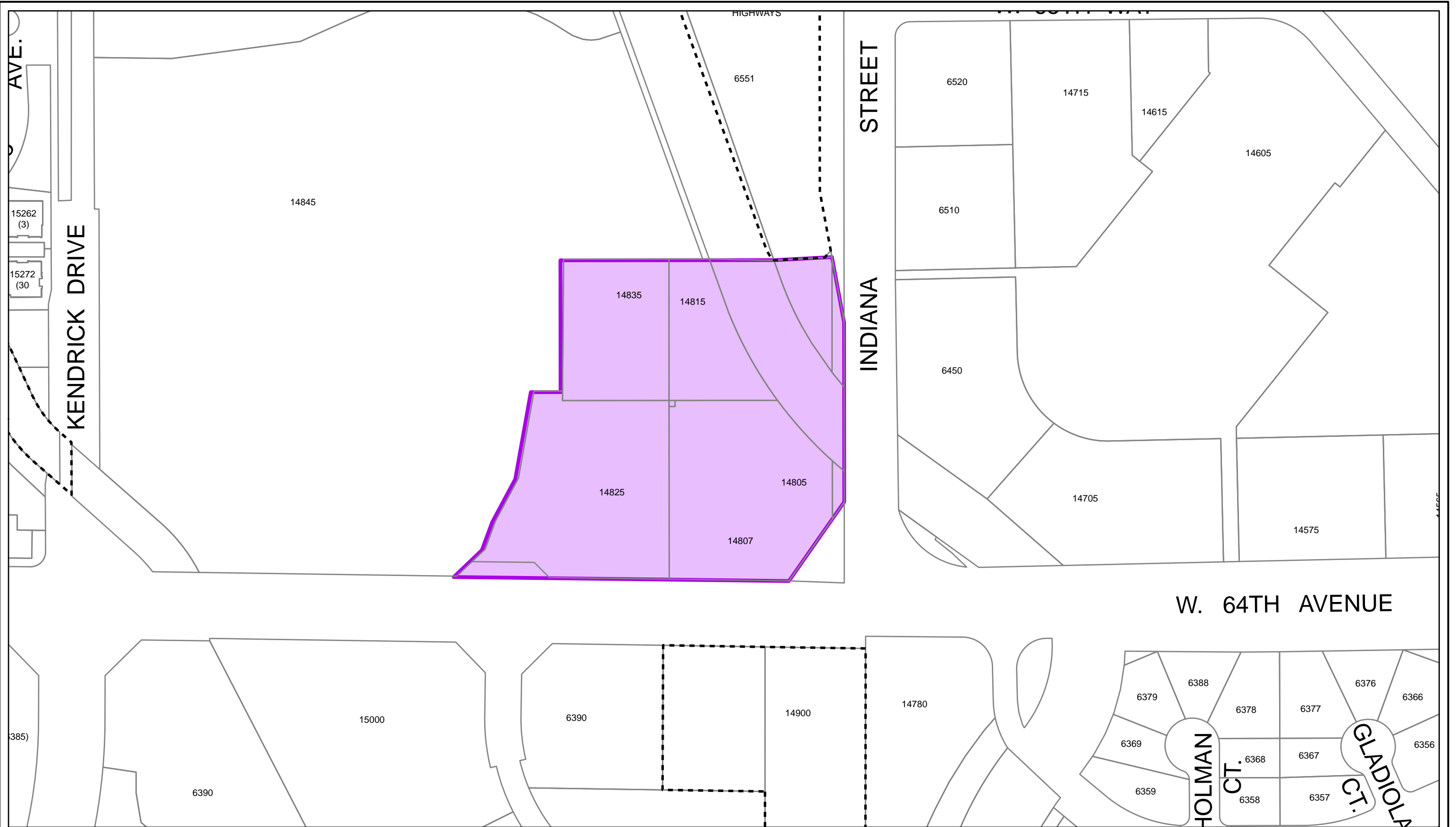
- LEGEND**
- Arvada West Town Center B.I.D.
 - City Limits



DATE: 4/25/2017

The maps provided are graphical representations intended for general informational purposes only, and may not reflect the most current information or conditions. THE CITY OF ARVADA MAKES NO WARRANTY OF MERCHANTABILITY OR WARRANTY FOR FITNESS OF USE FOR A PARTICULAR PURPOSE, EXPRESSED OR IMPLIED, WITH RESPECT TO THESE GRAPHICAL REPRESENTATIONS OR THE UNDERLYING DATA. Any users of these graphical representations or map products accepts same AS IS, WITH ALL FAULTS, and assumes all responsibility for the use thereof, and further covenants to hold the City harmless from and against all damage, loss, or liability arising from the use of this map product, in consideration of the City's having made this information available.

G:\GIS_Data\MXD\Base_Mapping\Districts\BID\BID_ArvadaWestTownCenter.mxd



**INDIANA MARKETPLACE
BUSINESS IMPROVEMENT DISTRICT**
CITY OF ARVADA Effective 4/22/2008

LEGEND

- Indiana Marketplace B.I.D.
- City Limits

Scale: 1:1,800

0 75 150 300 Feet

DATE: 1/12/2015

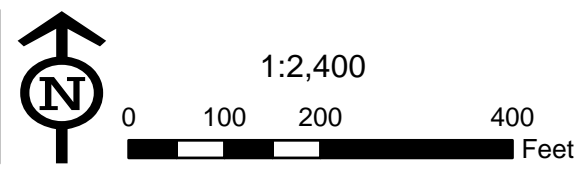
The maps provided are graphical representations intended for general informational purposes only, and may not reflect the most current information or conditions. THE CITY OF ARVADA MAKES NO WARRANTY OF MERCHANTABILITY OR WARRANTY FOR FITNESS OF USE FOR A PARTICULAR PURPOSE, EXPRESSED OR IMPLIED, WITH RESPECT TO THESE GRAPHICAL REPRESENTATIONS OR THE UNDERLYING DATA. Any users of these graphical representations or map products accepts same AS IS, WITH ALL FAULTS, and assumes all responsibility for the use thereof, and further covenants to hold the City harmless from and against all damage, loss, or liability arising from the use of this map product, in consideration of the City's having made this information available.

G:\GIS_Data\MXD\Base_Mapping\Districts\BID_IndianaMarketplace.mxd



OLDE TOWN
BUSINESS IMPROVEMENT DISTRICT
 CITY OF ARVADA
 Effective 6/24/2014

LEGEND
 Olde Town B.I.D.



DATE: 1/12/2015
 The maps provided are graphical representations intended for general informational purposes only, and may not reflect the most current information or conditions. THE CITY OF ARVADA MAKES NO WARRANTY OF MERCHANTABILITY OR WARRANTY FOR FITNESS OF USE FOR A PARTICULAR PURPOSE, EXPRESSED OR IMPLIED, WITH RESPECT TO THESE GRAPHICAL REPRESENTATIONS OR THE UNDERLYING DATA. Any users of these graphical representations or map products accepts same AS IS, WITH ALL FAULTS, and assumes all responsibility for the use thereof, and further covenants to hold the City harmless from and against all damage, loss, or liability arising from the use of this map product, in consideration of the City's having made this information available.
\\s\sys.arvada.org\engr\GIS_Data\MXD\Base_Mapping\Districts\BID_OldeTown.mxd